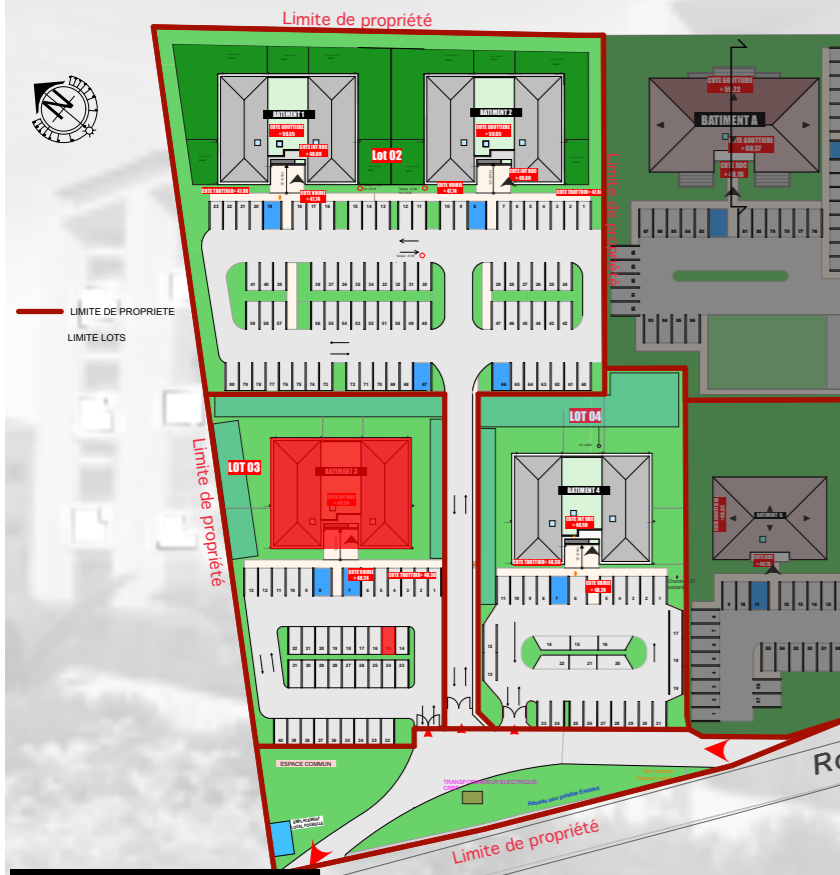


Appart 203 - Parking 15



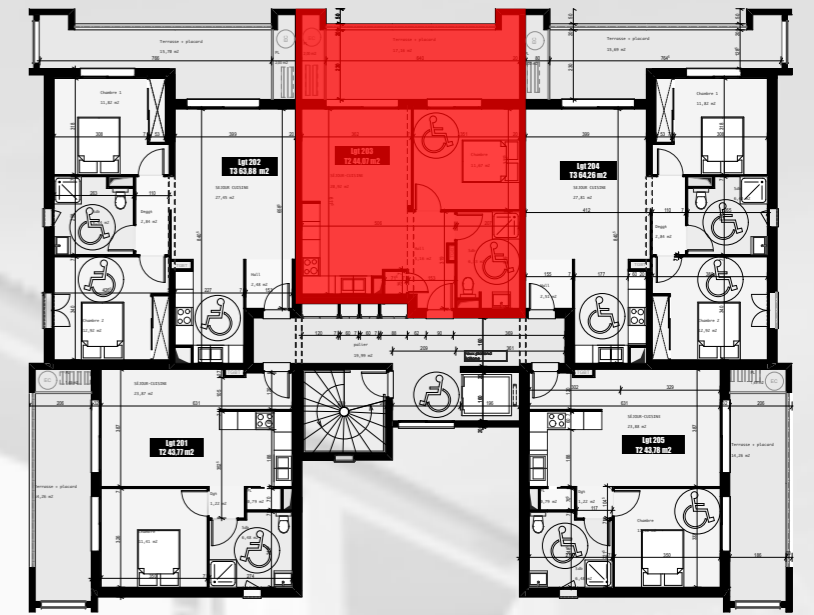
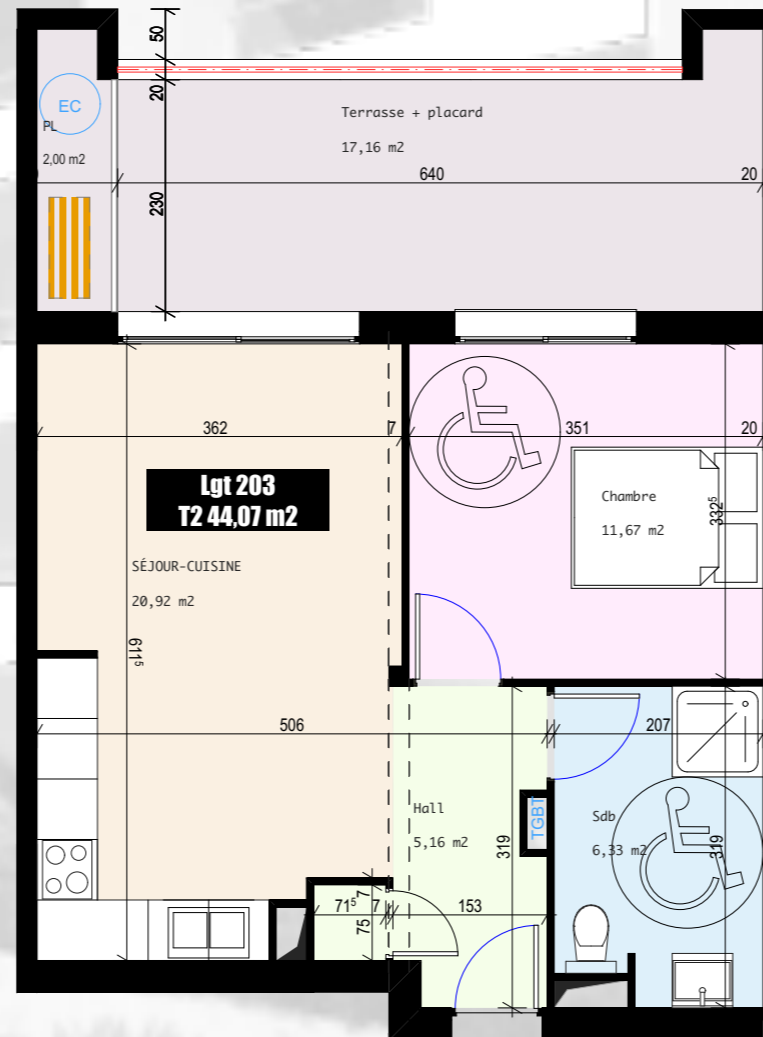
Vue Aérienne



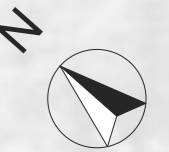
Plan de Masse



Perspective



Plan d'étage courant R+2



T2	203
Séjour/Cuisine	20,92 m ²
Hall	5,16 m ²
Chambre 1	11,67 m ²
SdB	6,32 m ²
TOTAL surface habitable	44,07 m²
Terrasse + placard technique	18,28 m ²

Résidence *Sainte Lucie*

commune de VESCOVATO