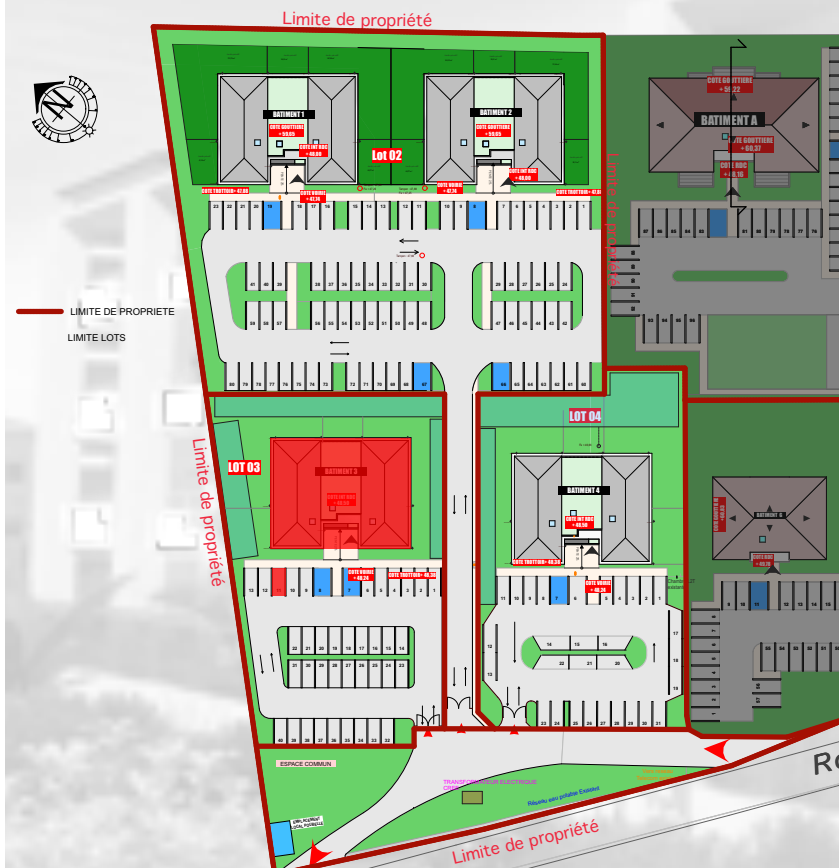


Appart 104 - Parking 11



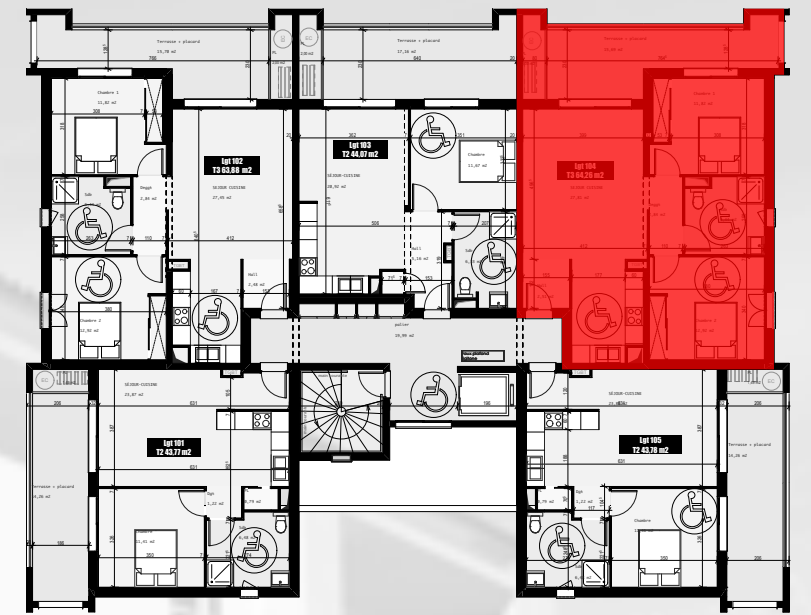
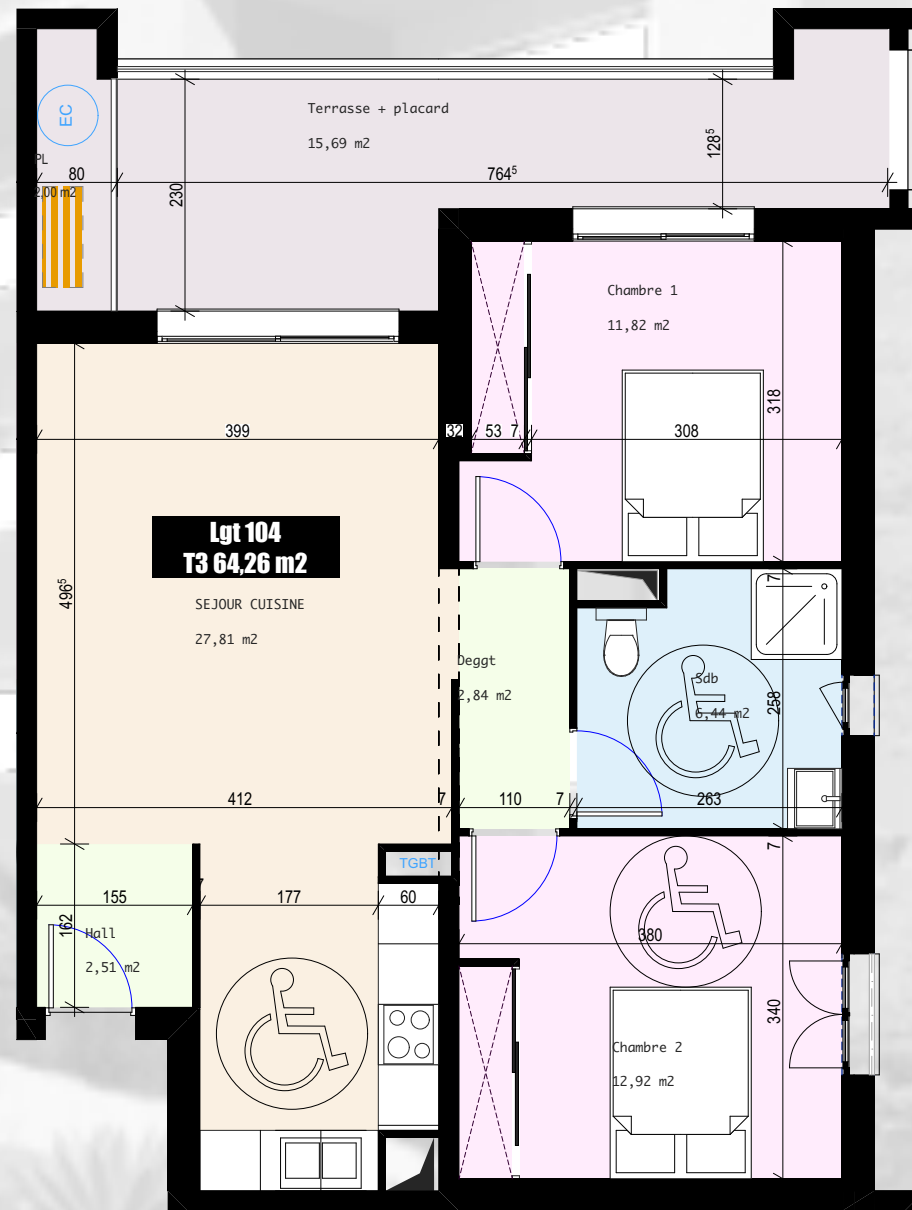
Vue Aérienne



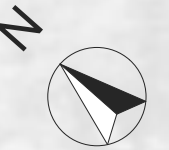
Plan de Masse



Perspective



Plan d'étage courant R+1



T3	104
Séjour Cuisine	27,81 m ²
Hall	2,51 m ²
Dgt	2,84 m ²
Chambre 1	11,78 m ²
Chambre 2	12,88 m ²
SdB+W.C.	6,44 m ²
TOTAL surface habitable	64,26 m²
Terrasse + placard technique	16,99 m ²

Résidence *Sainte Lucie*

commune de VESCOVATO