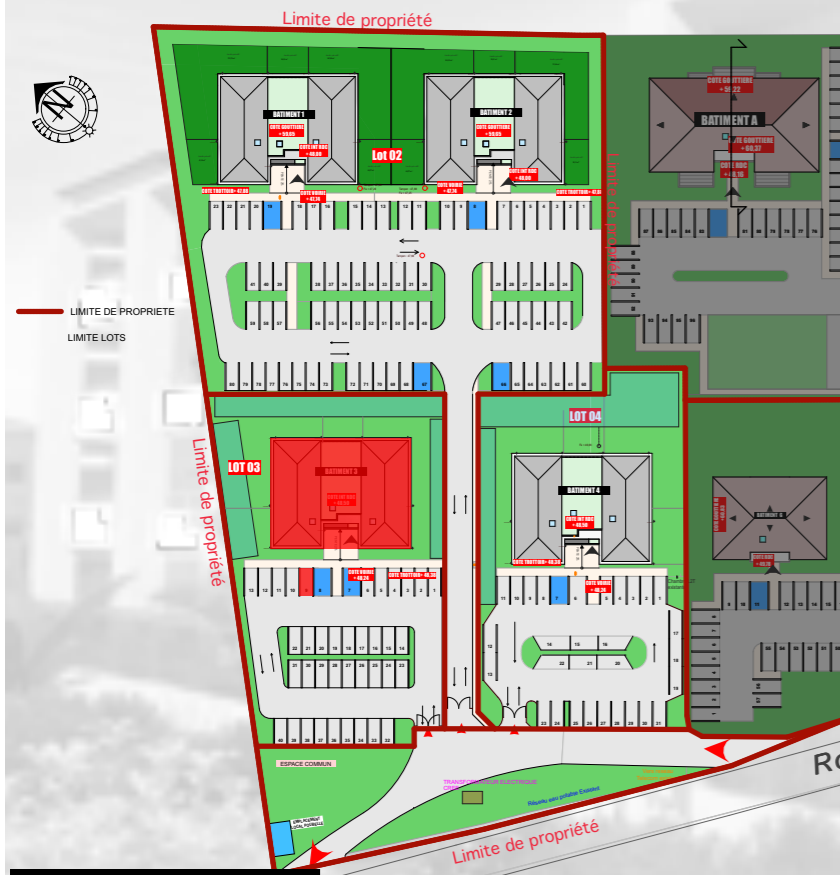


Appart 102 - Parking 09



Vue Aérienne

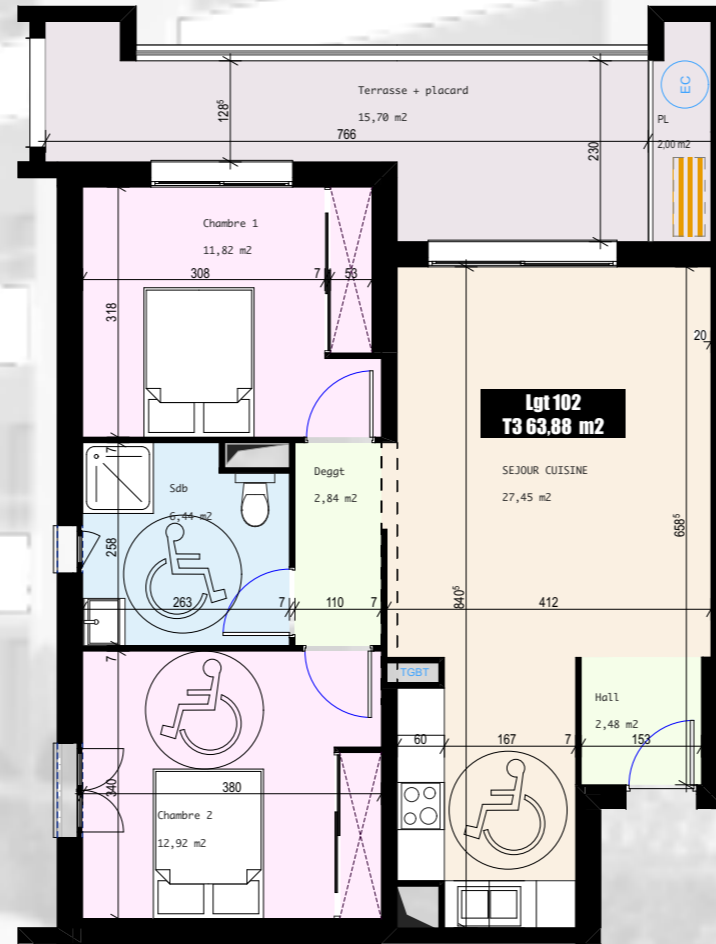


Plan de Masse

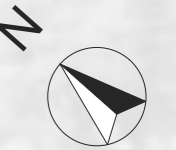
802



Perspective



Plan d'étage courant R+1



T3

102

Séjour Cuisine	27,45 m ²
Hall	2,48 m ²
Dgt	2,84 m ²
Chambre 1	11,78 m ²
Chambre 2	12,88 m ²
Sdb+W.C.	6,45 m ²
TOTAL surface habitable	63,88 m²
Terrasse + placard technique	17,00 m ²

Résidence *Sainte Lucie*

commune de VESCOVATO