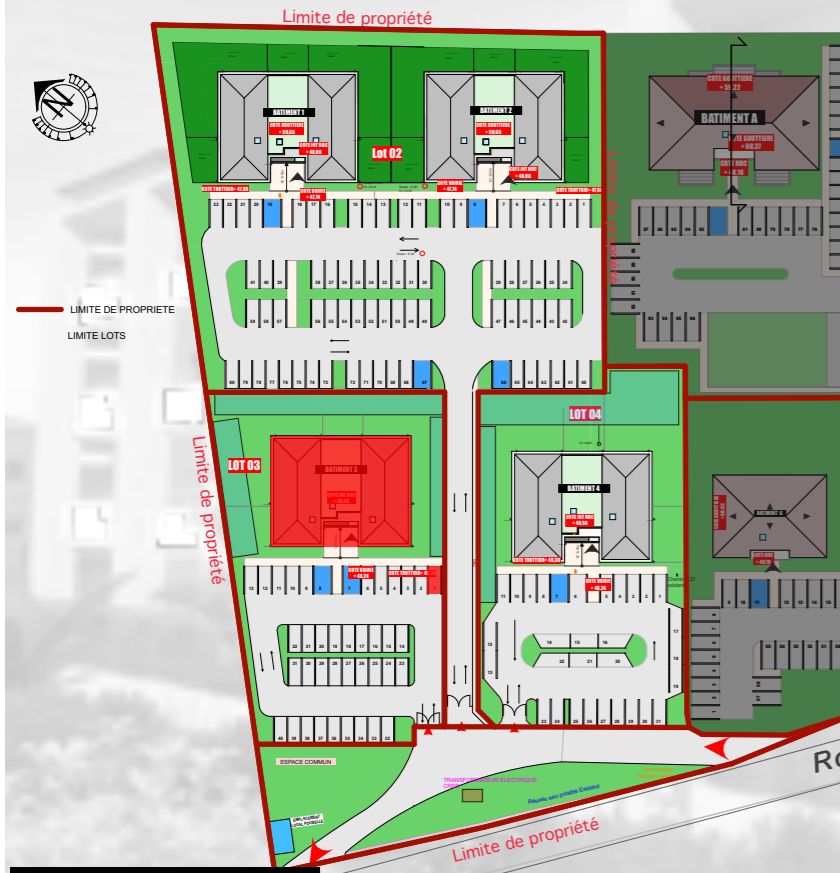


Appart 001 - Parking 01



Vue Aérienne



Plan de Masse



Perspective

T2 001

Séjour/Cuisine	23,87 m ²
Dgt	1,22 m ²
Chambre 1	11,41 m ²
Placard	0,79 m ²
SdB + WC	6,48 m ²

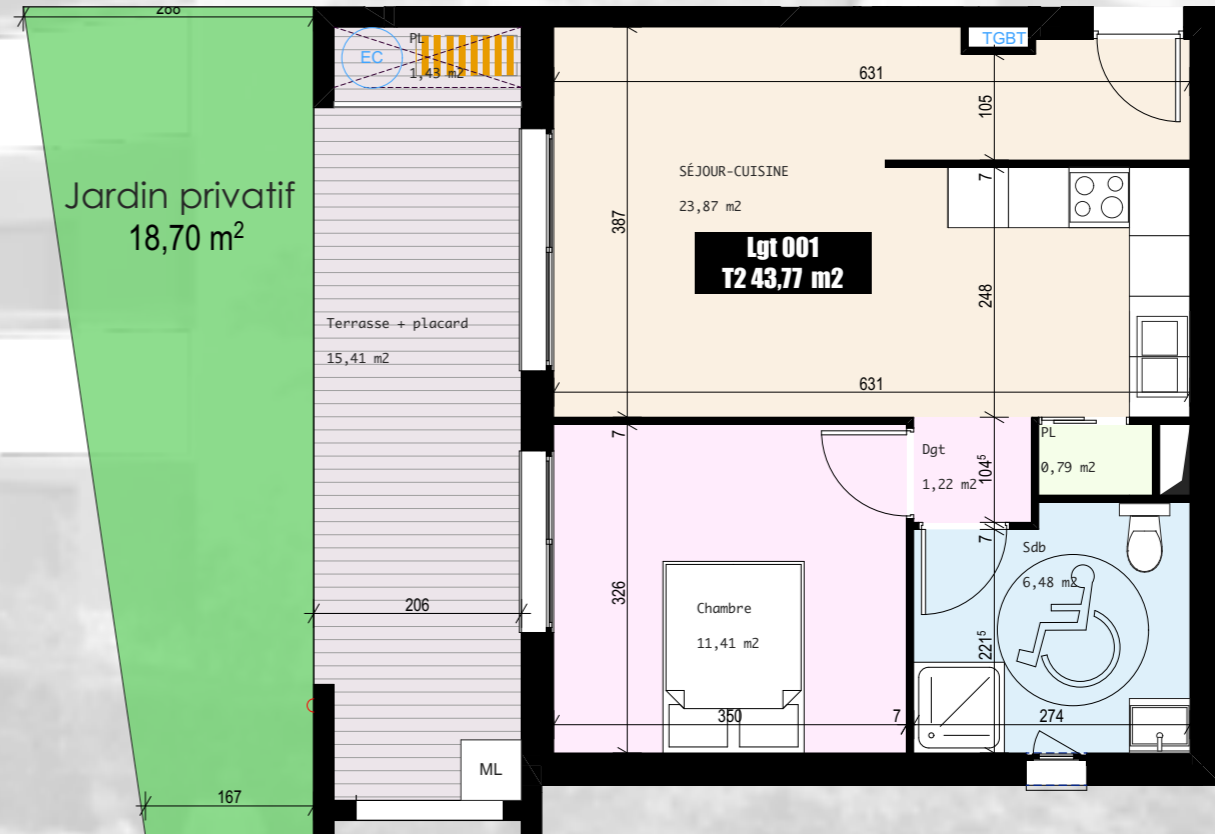
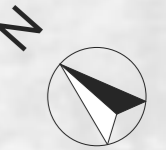
TOTAL surface habitable 43,77 m²

Terrasse + placard technique 15,41 m²

Jardin 18,70 m²



Plan d'étage courant RDC



Résidence *Sainte Lucie*

commune de VESCOVATO