

Résidence "PARC DE SAINTE LUCIE"

COMMUNE DE BORGO
BATIMENT B - LOT 24 - ETAGE 2 - TYPE 4

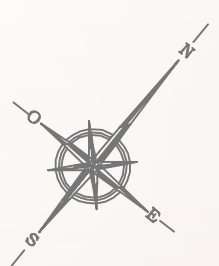
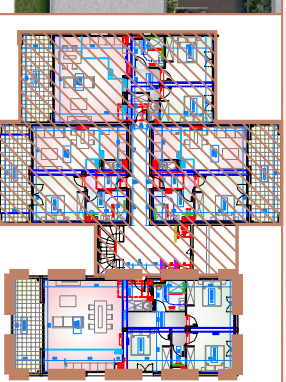


TABLEAU DES SURFACES
BATIMENT B - LOT 24 - T4 - R+2

ENTREE	4,43m²
PIECE A VIVRE	38,04m²
CHAMBRE 3	10,76m²
CHAMBRE 2	10,77m²
CHAMBRE 1	12,24m²
WC	1,71m²
DEGAGEMENT	6,60m²
SALLE DEAU	5,09m²
TOTAL	89,64m²
TERRASSE	14,89m²

LOT 24

