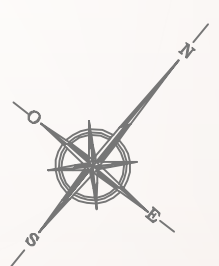
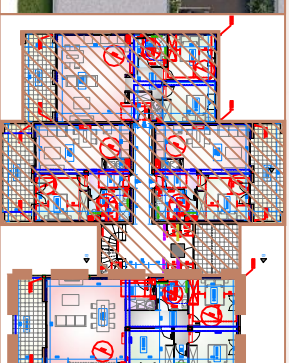


# Résidence "PARC DE SAINTE LUCIE"

COMMUNE DE BORGO  
BATIMENT B - LOT 13 - REZ DE CHAUSSEE - TYPE 4



**TABLEAU DES SURFACES**  
**BATIMENT B - LOT 13 - T4 - Rdc**

ENTREE	4,43m²
PIECE A VIVRE	38,04m²
CHAMBRE 1	10,76m²
CHAMBRE 2	10,77m²
CHAMBRE 3	12,24m²
WC	1,71m²
DEGAGEMENT	6,60m²
SALLE DEAU	5,09m²
TOTAL	89,64m²
TERRASSE	16,12m²
JARDIN PRIVATIF	env. 130,00m²

LOT 13

