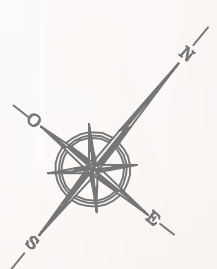
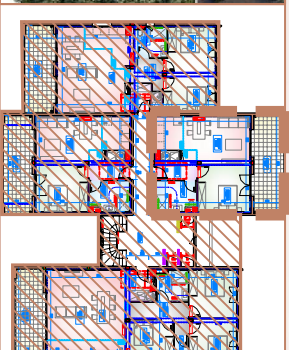


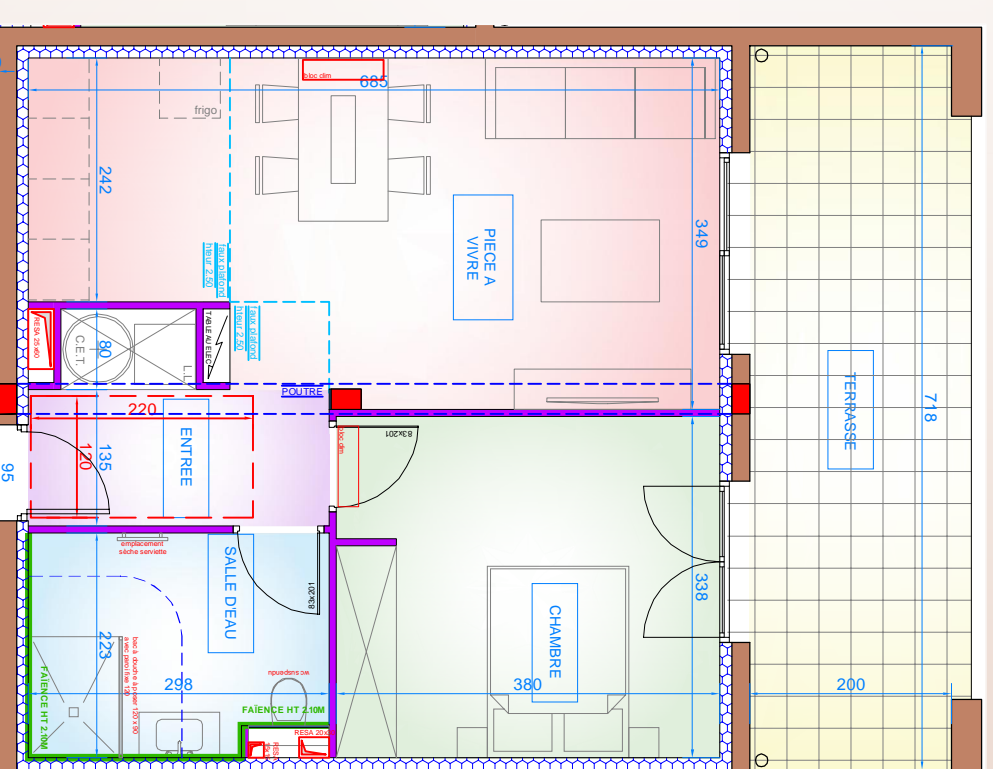
Résidence "PARC DE SAINTE LUCIE"

COMMUNE DE BORGO
BATIMENT A - LOT 11 - ETAGE 2 - TYPE 2



TABEAU DES SURFACES
BATIMENT A - LOT 11 - T2 - R+2

ENTREE	3,89m²
PIECE A VIVRE	21,50m²
CHAMBRE	12,86m²
SALLE DEAU	6,47m²
TOTAL	44,69m²
TERRASSE	15,51m²



LOT 11