

Résidence "PARC DE SAINTE LUCIE"

COMMUNE DE BORGO
BATIMENT A - LOT 05 - ETAGE 1 - TYPE 2

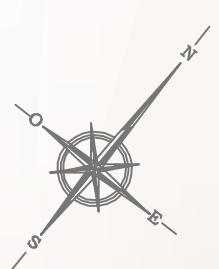
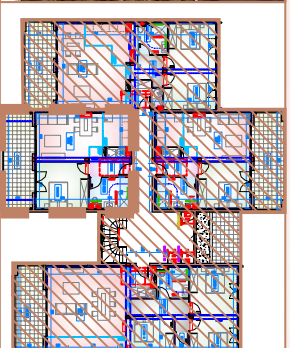


TABLEAU DES SURFACES
BATIMENT A - LOT 05 - T2 - R+1

ENTREE	3,85m ²
PIECE A VIVRE	21,50m ²
CHAMBRE	12,86m ²
SALLE D'EAU	6,47m ²
TOTAL	44,68m ²
TERRASSE	15,51m ²

