

Résidence "PARC DE SAINTE LUCIE"

COMMUNE DE BORGO

BATIMENT D - LOT 38 - REZ DE CHAUSSEE - TYPE 2

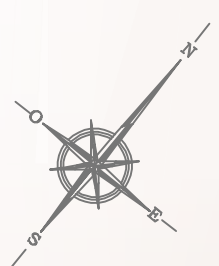
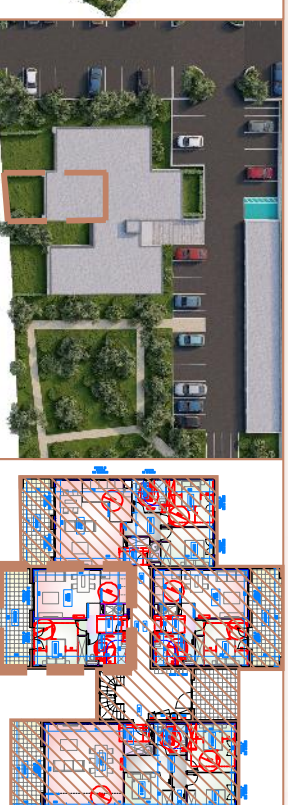


TABLEAU DES SURFACES BATIMENT D - LOT 38 - T2 - Rdc	
ENTREE	3,85m ²
PIECE A VIVRE	21,50m ²
CHAMBRE	12,86m ²
SALLE D'EAU	6,47m ²
TOTAL	44,68m ²
TERRASSE	15,51m ²
JARDIN PRIVATIF	env. 35,00m ²

