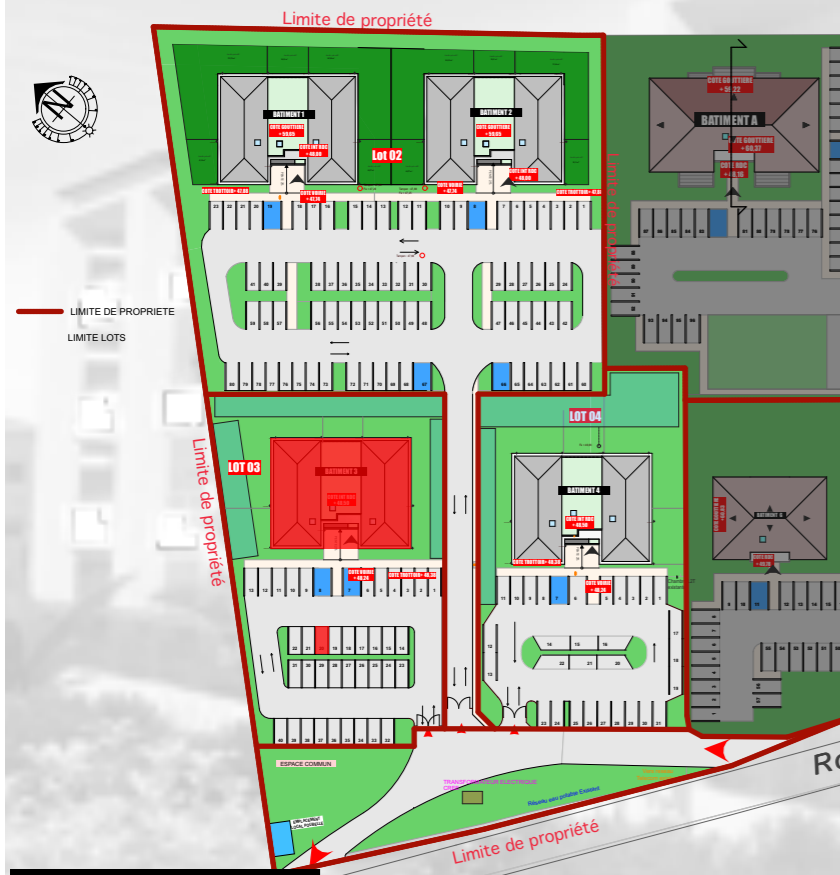


# Appart 303 - Parking 20



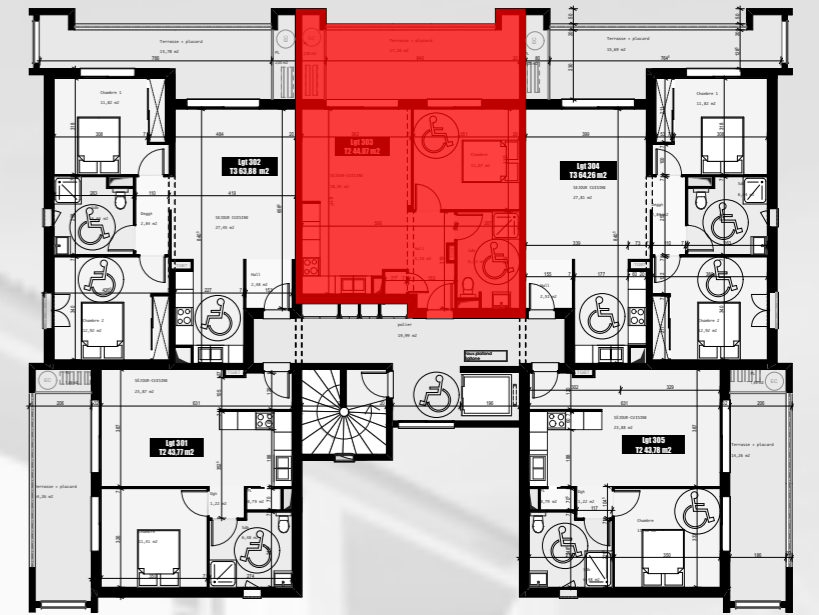
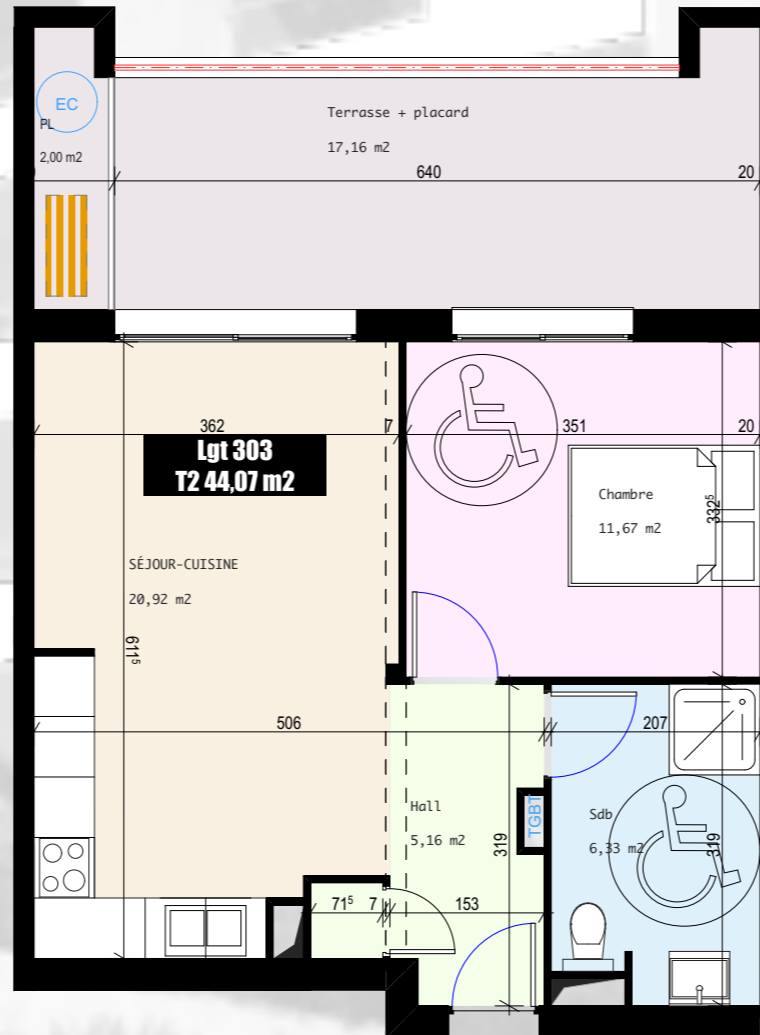
Vue Aérienne



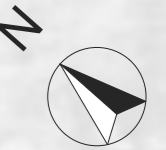
Plan de Masse



Perspective



Plan d'étage courant R+3



T2	303
Séjour/Cuisine	20,92 m <sup>2</sup>
Hall	5,16 m <sup>2</sup>
Chambre 1	11,67 m <sup>2</sup>
SdB	6,32 m <sup>2</sup>
<b>TOTAL surface habitable</b>	<b>44,07 m<sup>2</sup></b>
Terrasse + placard technique	18,28 m <sup>2</sup>

## Résidence *Sainte Lucie*

commune de VESCOVATO